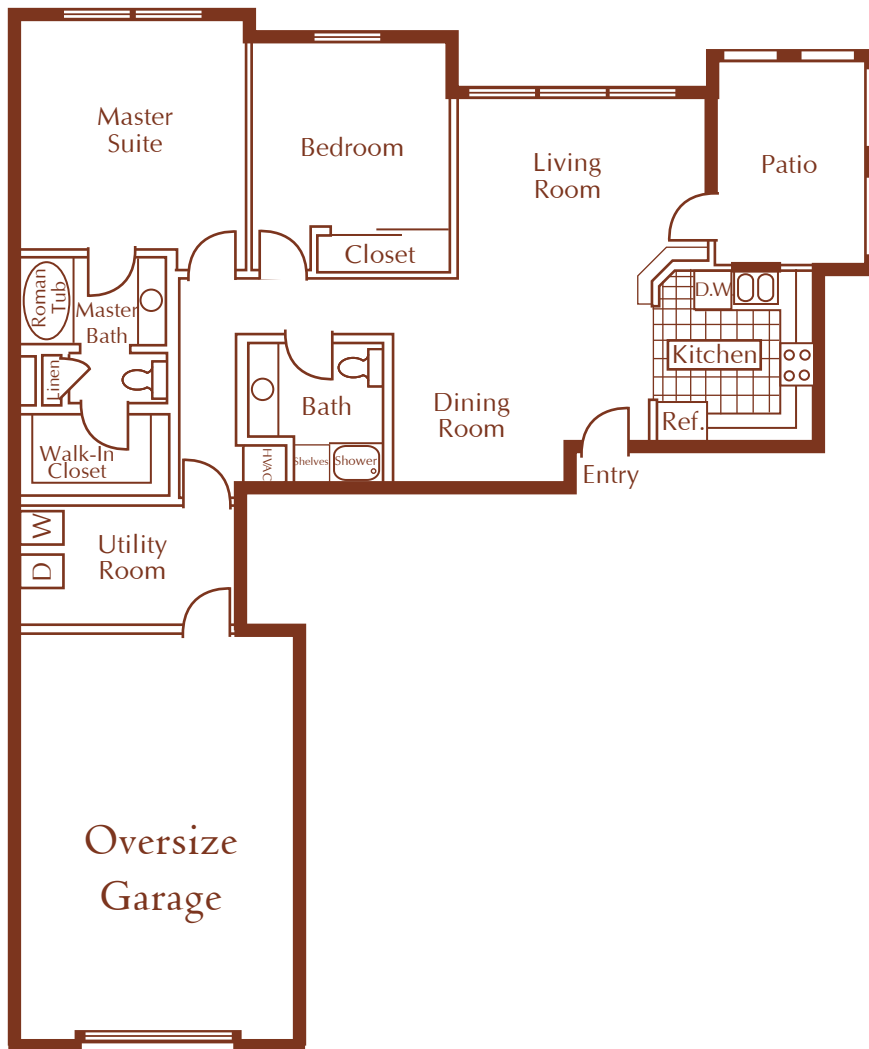


**2 Bedroom, 2 Bath
with garage, first floor**

1,663 Square Feet

Starting at \$1,190

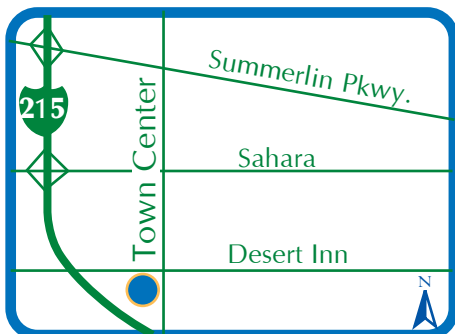


INTERIOR FEATURES

- 1 AND 2 BEDROOM TOWNHOMES WITH DIRECT ACCESS ONE CAR GARAGE
- SECOND FLOOR APARTMENTS FEATURE GROUND-LEVEL ENTRY WITH INTERIOR STAIRWELL
- FULLY APPOINTED GOURMET KITCHEN
- UTILITY ROOM WITH FULL-SIZE WASHER AND DRYER
- ROMAN TUB
- WALK-IN CLOSET WITH BUILT-IN SHELVING
- CERAMIC TILE FLOORING IN THE KITCHEN, BATH AND ENTRY AREAS

RECREATIONAL FEATURES

- AUTOMATED GATE ACCESS
- GRAND CLUBHOUSE
- FITNESS CENTER WITH NAUTILUS EQUIPMENT
- LARGE RESORT-STYLE POOL
- RELAXING SPA
- BARBECUE AREA WITH PICNIC TABLES
- SPORTS COURT
- LIGHTED TENNIS COURT



MON-FRI: 8AM-6PM
SAT & SUN: 8AM-6PM

PRICES SUBJECT TO CHANGE WITHOUT NOTICE

MORNINGSTAR
3355 SOUTH TOWN CENTER DRIVE
LAS VEGAS, NEVADA 89135

PHONE: 702.451.0409
FAX: 702.451.0462

WWW.MORNINGSTARAPARTMENTS.COM