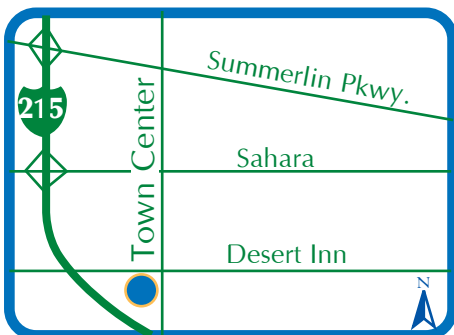
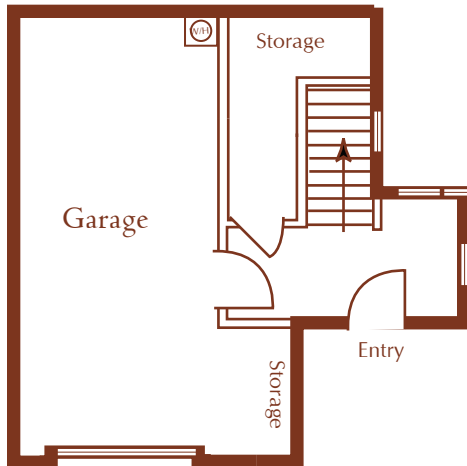
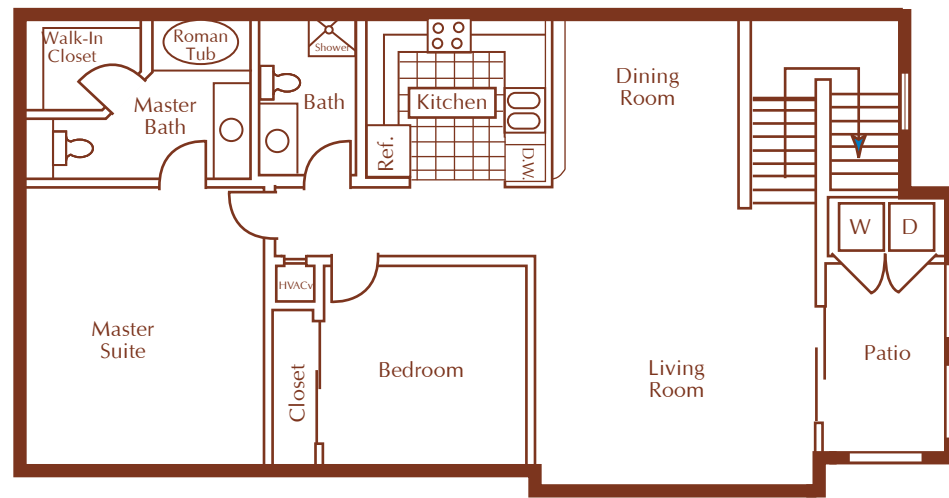


**2 Bedroom, 2 Bath  
with garage, second floor**

**1,518 Square Feet**

**Starting at \$1,180**



**MON-FRI: 8AM-6PM**

**SAT & SUN: 8AM-6PM**

**PRICES SUBJECT TO CHANGE WITHOUT NOTICE**

## INTERIOR FEATURES

- **1 AND 2 BEDROOM TOWNHOMES WITH DIRECT ACCESS ONE CAR GARAGE**
- **SECOND FLOOR APARTMENTS FEATURE GROUND-LEVEL ENTRY WITH INTERIOR STAIRWELL**
- **FULLY APPOINTED GOURMET KITCHEN**
- **UTILITY ROOM WITH FULL-SIZE WASHER AND DRYER**
- **ROMAN TUB**
- **WALK-IN CLOSET WITH BUILT-IN SHELVING**
- **CERAMIC TILE FLOORING IN THE KITCHEN, BATH AND ENTRY AREAS**

## RECREATIONAL FEATURES

- **AUTOMATED GATE ACCESS**
- **GRAND CLUBHOUSE**
- **FITNESS CENTER WITH NAUTILUS EQUIPMENT**
- **LARGE RESORT-STYLE POOL**
- **RELAXING SPA**
- **BARBECUE AREA WITH PICNIC TABLES**
- **SPORTS COURT**
- **LIGHTED TENNIS COURT**

**MORNINGSTAR**  
**3355 SOUTH TOWN CENTER DRIVE**  
**LAS VEGAS, NEVADA 89135**

**PHONE: 702.451.0409**

**FAX: 702.451.0462**

**WWW.MORNINGSTARAPARTMENTS.COM**