

**1 Bedroom, 1 Den, 1 Bath
with garage, second floor**

1,460 Square Feet

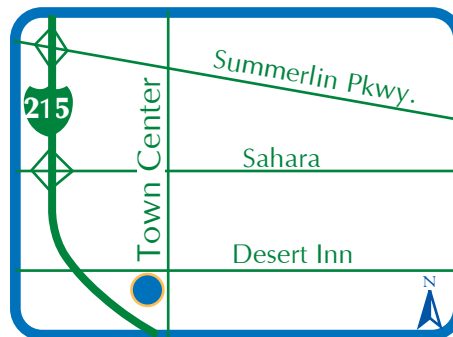
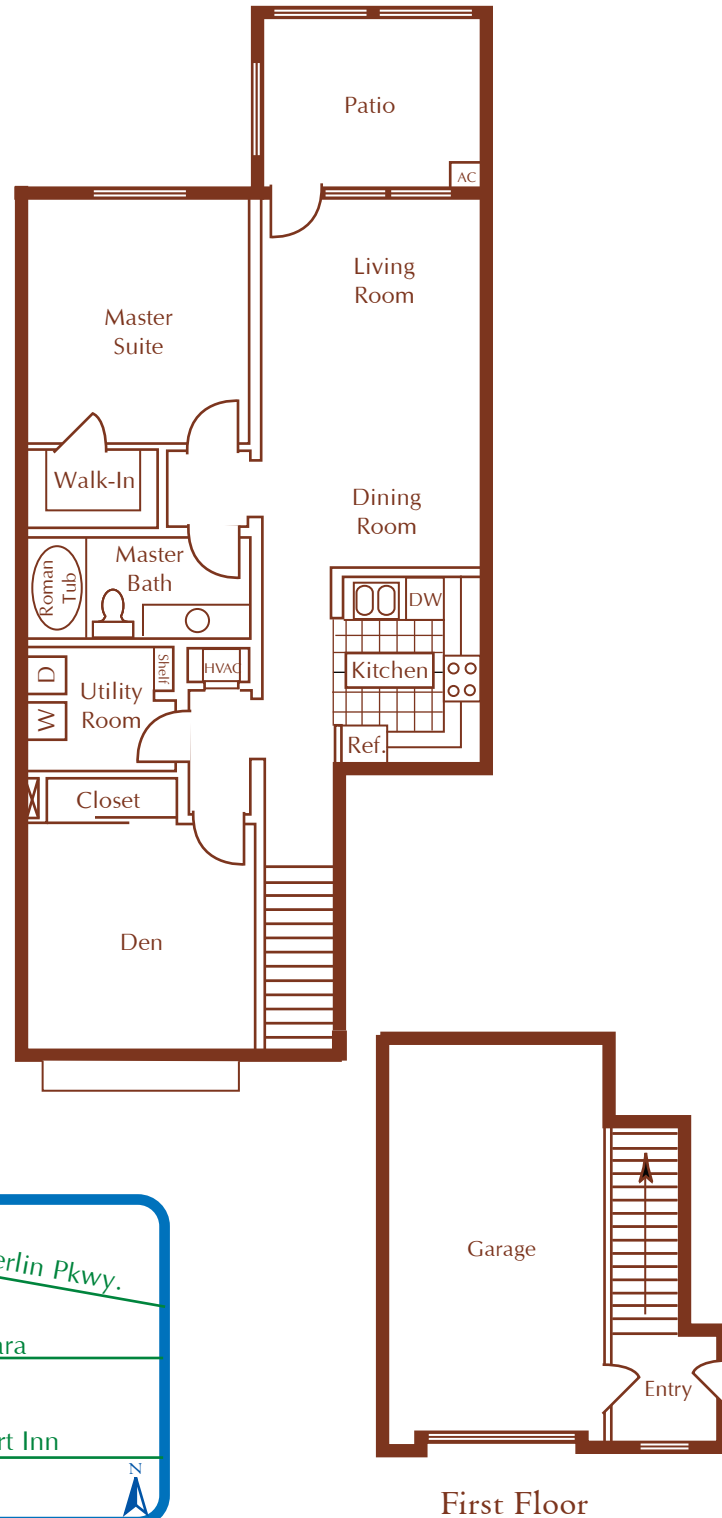
Starting at \$1,090

INTERIOR FEATURES

- **1 AND 2 BEDROOM TOWNHOMES WITH DIRECT ACCESS ONE CAR GARAGE**
- **SECOND FLOOR APARTMENTS FEATURE GROUND-LEVEL ENTRY WITH INTERIOR STAIRWELL**
- **FULLY APPOINTED GOURMET KITCHEN**
- **UTILITY ROOM WITH FULL-SIZE WASHER AND DRYER**
- **ROMAN TUB**
- **WALK-IN CLOSET WITH BUILT-IN SHELVING**
- **CERAMIC TILE FLOORING IN THE KITCHEN, BATH AND ENTRY AREAS**

RECREATIONAL FEATURES

- **AUTOMATED GATE ACCESS**
- **GRAND CLUBHOUSE**
- **FITNESS CENTER WITH NAUTILUS EQUIPMENT**
- **LARGE RESORT-STYLE POOL**
- **RELAXING SPA**
- **BARBECUE AREA WITH PICNIC TABLES**
- **SPORTS COURT**
- **LIGHTED TENNIS COURT**



MON-FRI: 8AM-6PM
SAT & SUN: 8AM-6PM

PRICES SUBJECT TO CHANGE WITHOUT NOTICE

MORNINGSTAR
3355 SOUTH TOWN CENTER DRIVE
LAS VEGAS, NEVADA 89135

PHONE: 702.451.0409
FAX: 702.451.0462

WWW.MORNINGSTARAPARTMENTS.COM